

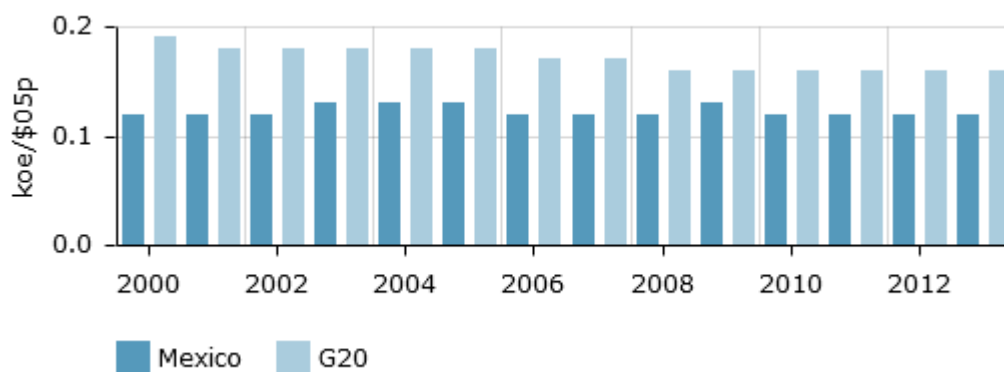
G20 key indicators Mexico

Table 1: Intensities (Base 100 = G20)

Mexico	2013 (100=G20)
Primary intensity	75.00
Final intensity	74.00
Industry intensity	48.00
Transport intensity	179.00
Service intensity	29.00
Agriculture intensity	179.00

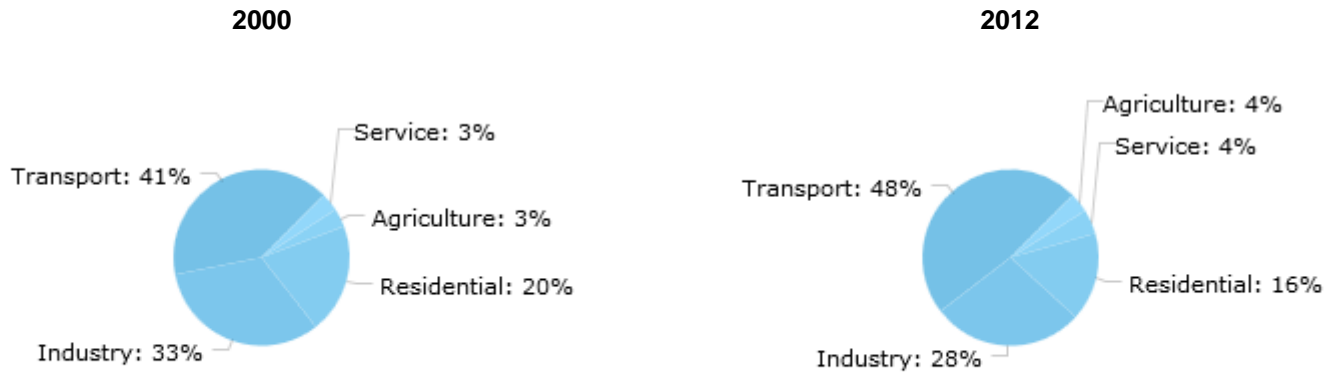
Source: Enerdata

Figure 1: Trends in primary energy intensity at purchasing power parities



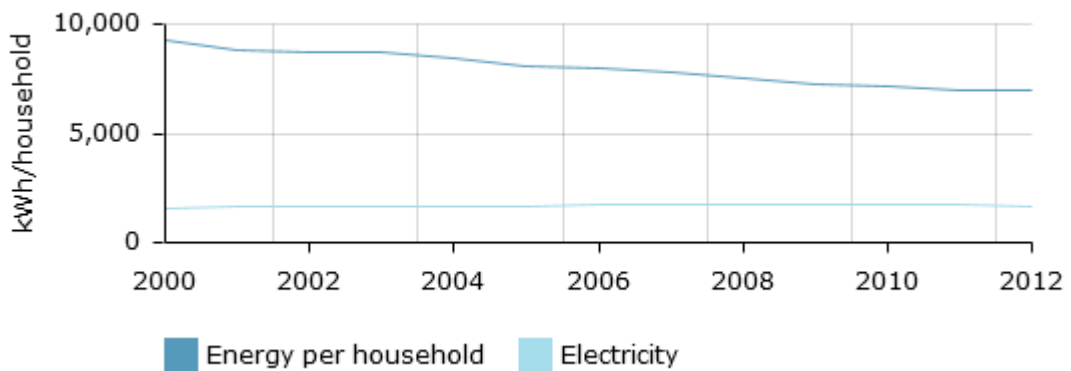
Source: Enerdata

Figure 2: Breakdown of final energy by sector



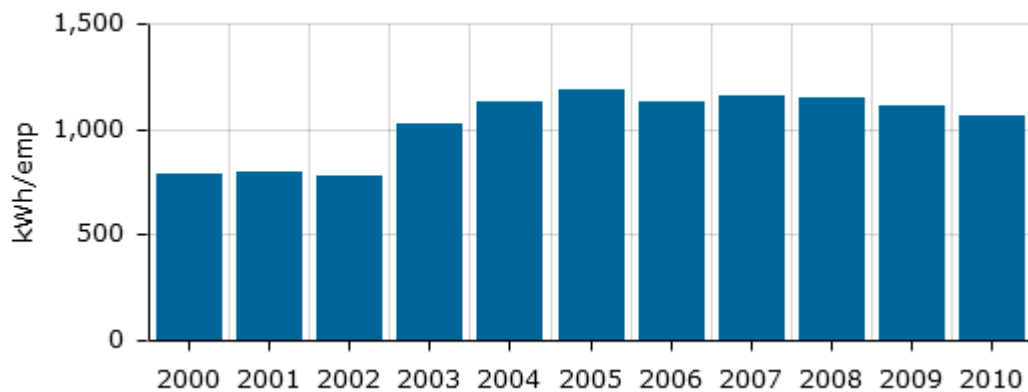
Source: Enerdata

Figure 3: Energy consumption per household



Source: Enerdata

Figure 4: Unit electricity consumption of services per employee



Source: Enerdata