

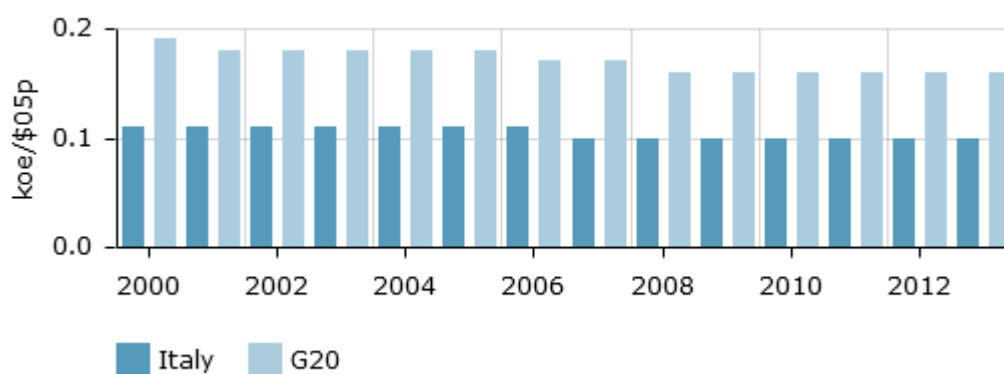
G20 key indicators Italy

Table 1: Intensities (Base 100 = G20)

Italy	2013 (100=G20)
Primary intensity	62.00
Final intensity	76.00
Industry intensity	64.00
Transport intensity	183.00
Service intensity	82.00
Agriculture intensity	183.00

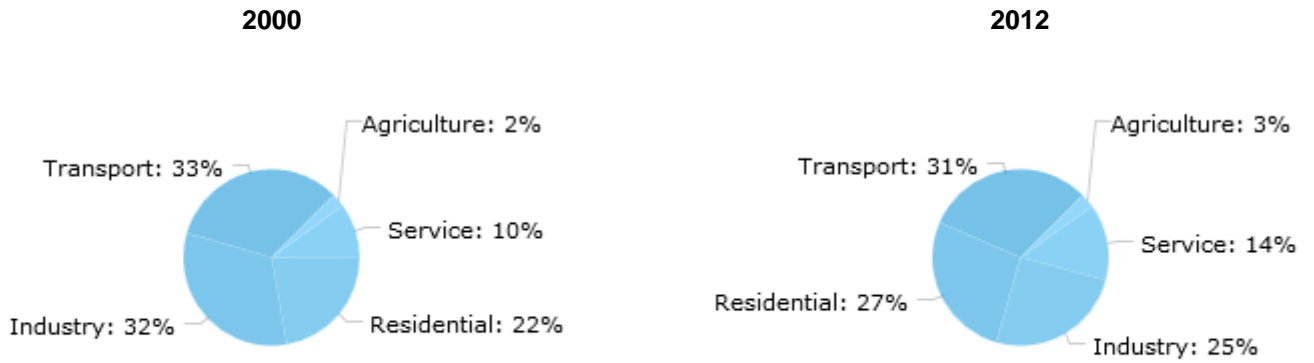
Source: Enerdata

Figure 1: Trends in primary energy intensity at purchasing power parities



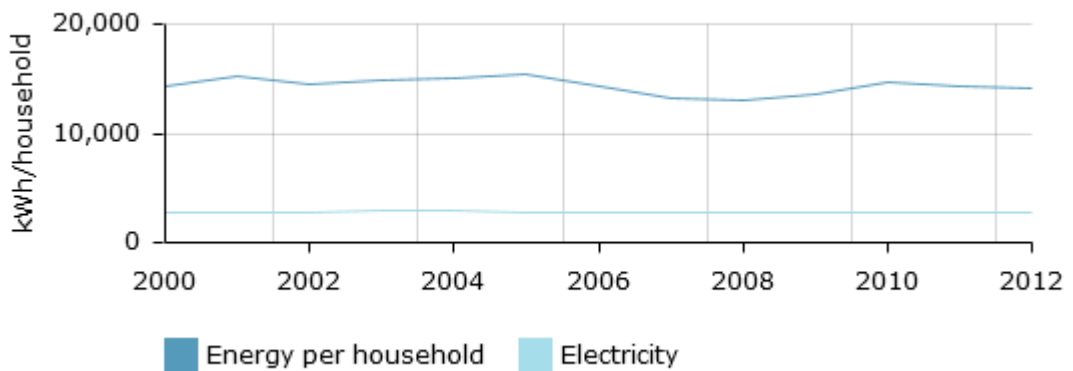
Source: Enerdata

Figure 2: Breakdown of final energy by sector



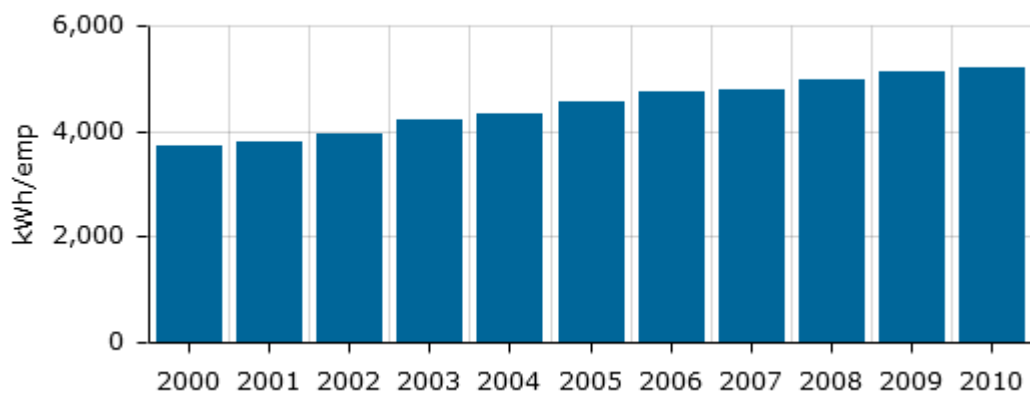
Source: Enerdata

Figure 3: Energy consumption per household



Source: Enerdata

Figure 4: Unit electricity consumption of services per employee



Source: Enerdata