

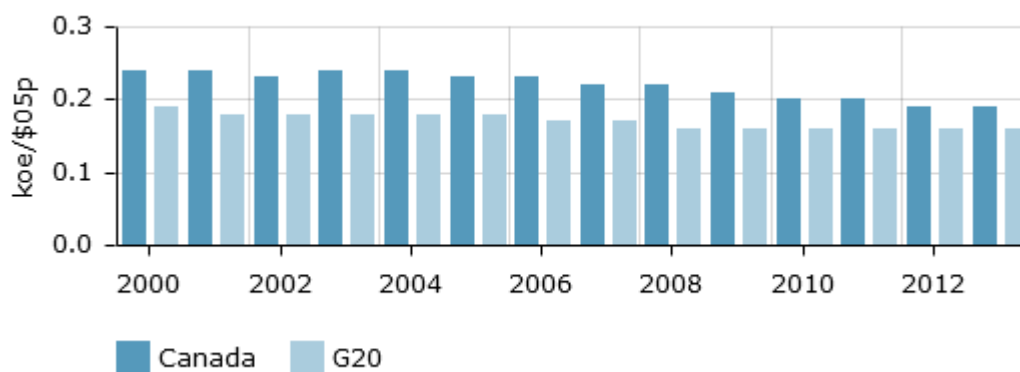
G20 key indicators Canada

Table 1: Intensities (Base 100 = G20)

Canada	2013 (100=G20)
Primary intensity	121.00
Final intensity	152.00
Industry intensity	142.00
Transport intensity	445.00
Service intensity	176.00
Agriculture intensity	445.00

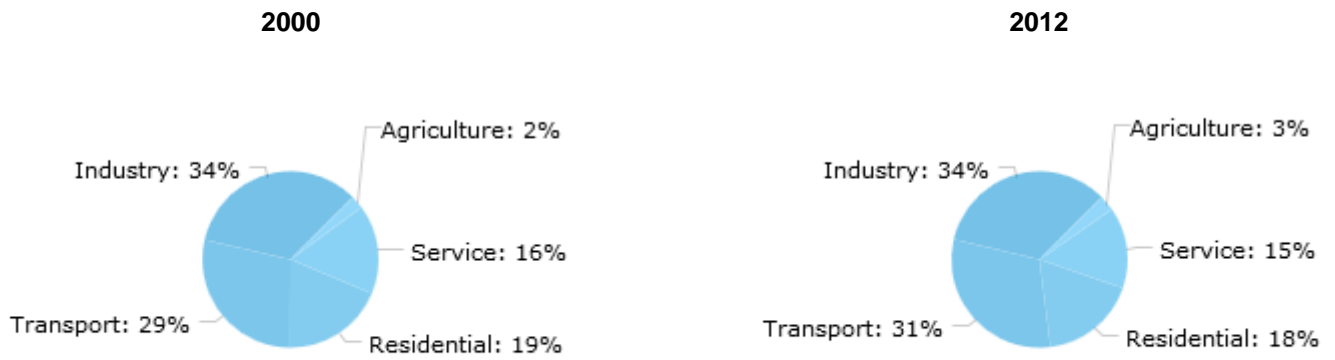
Source: Enerdata

Figure 1: Trends in primary energy intensity at purchasing power parities



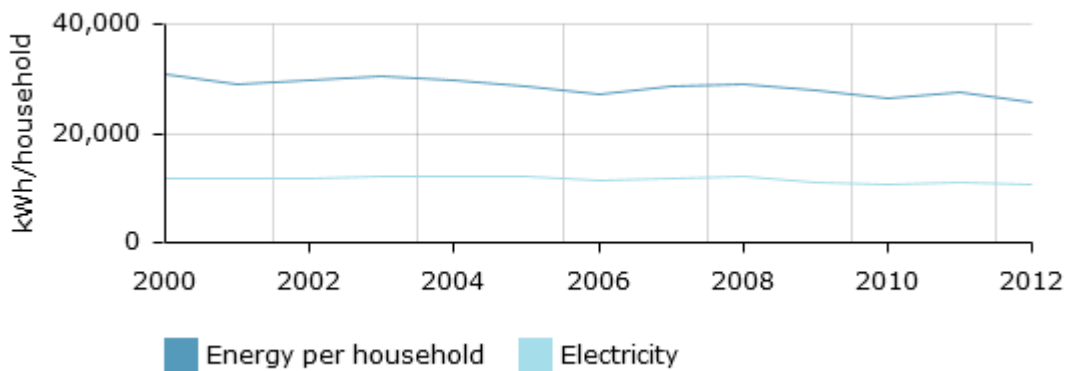
Source: Enerdata

Figure 2: Breakdown of final energy by sector



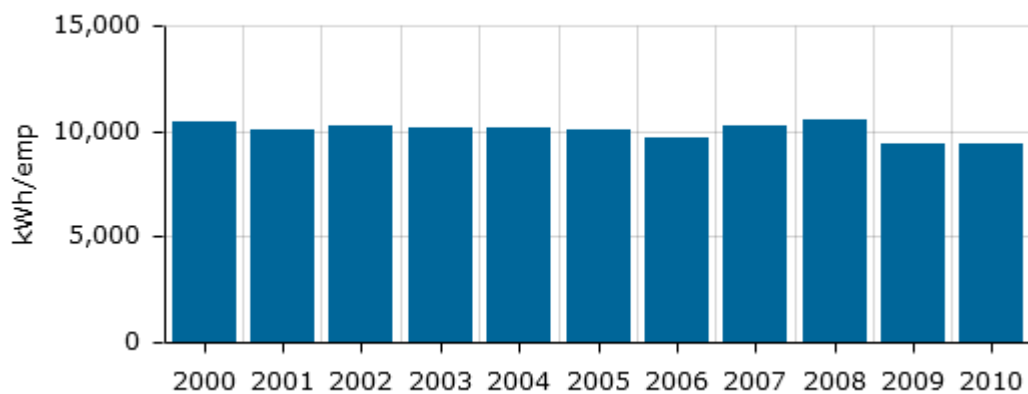
Source: Enerdata

Figure 3: Energy consumption per household



Source: Enerdata

Figure 4: Unit electricity consumption of services per employee



Source: Enerdata